

Customer :

customer

Customer part :

customer part

Comment :

Comment

S1=5.09

S2=6.83

Tmax=469

Tp S2=508.0

PI=0.43

HI=84

Sample =1757.80

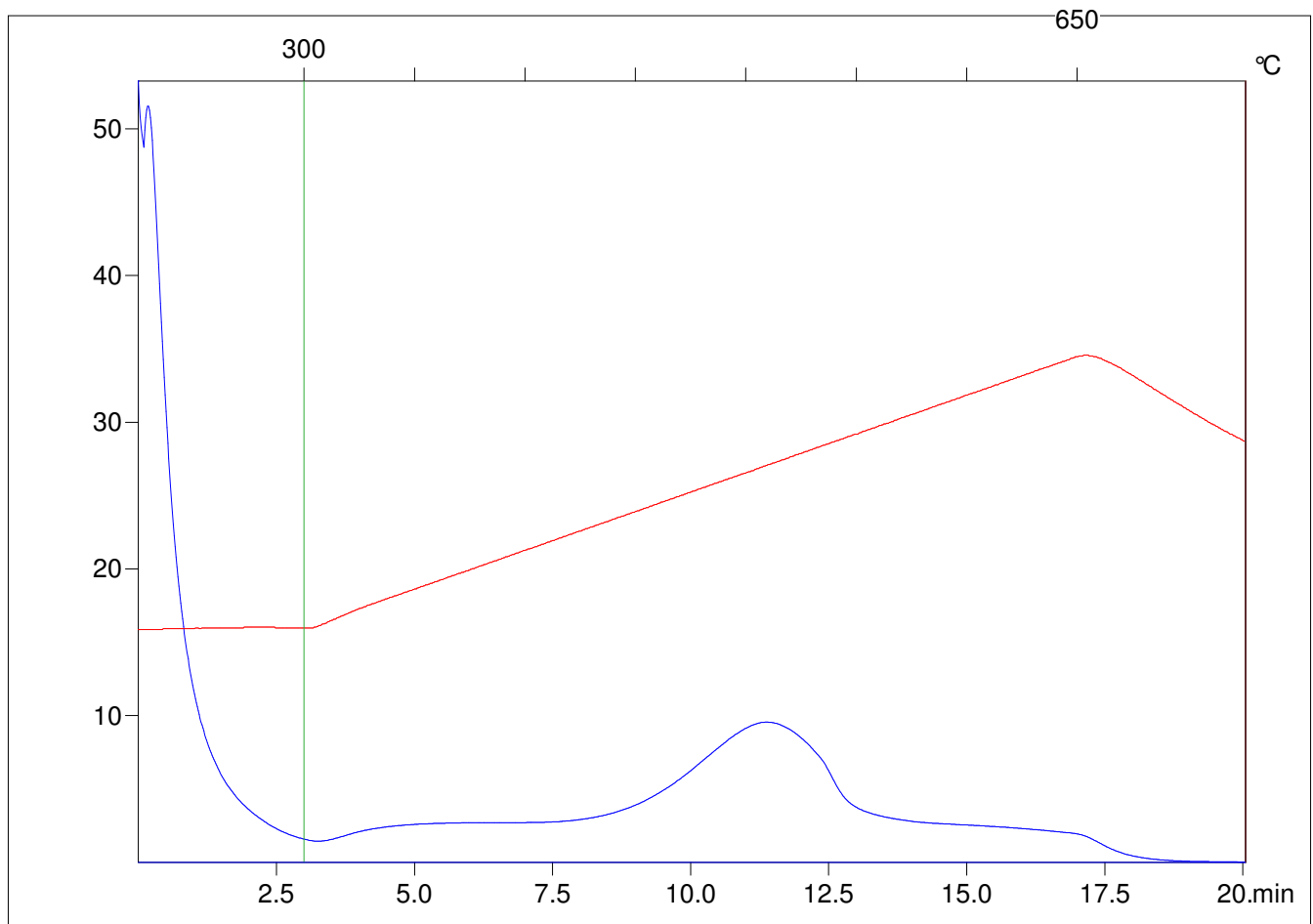
Method =Bulk Rock

Cycle=Basic

KFID(10*9)=1444

Qty =70.1

TOC=8.1



C:\VINC\PK3_1792\PK016.R00 : FID pyrolysis graphic

State

Pyro Status

Oxi Status